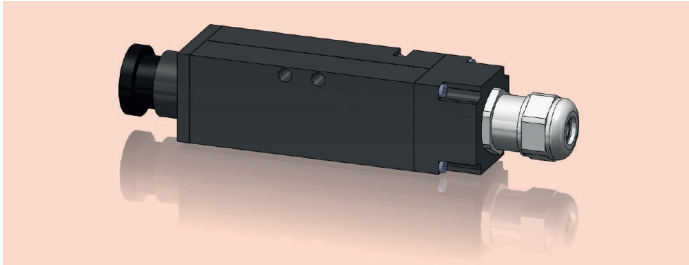


MINIATURE WELDING CAMERA SYSTEM



In semi-automatic or automatic welding systems the operation and control of the welding head mainly occurs from a control station. Optimal positioning and adjustment of the welding process requires a visual inspection.

The WCS-U is the world's smallest analogue **colour USB** camera incorporating Native Wide Dynamic Range™ sensor technology employing a solar cell pixel structure. This offers a true logarithmic response giving optical illumination without saturation with more than 140dB of true dynamic range.

Our Miniature Welding Camera Solution (system only 20 x 20 x 79mm) is ideal for use in small and tight viewing areas. The camera delivers a sharp colour picture which permits optimal viewing of the welding head, workpiece and the welding arc. The camera automatically compensates exposure during switchover to arc-ignition. The camera control software includes image enhancement in up to four user selected areas.

The camera accepts M12 lenses and can also be fitted with a C-mount lens adapter.

- Our other welding camera systems include :
- WCS-Z Zoom Lens Camera System
 - WCS-Z2F Two Filter Zoom Lens Camera
 - WCS-P Prime Lens Camera System
 - WCS-SM Super Mini Monochrome Camera
 - WCS-M Miniature Monochrome Camera
 - WCS-U Miniature Colour USB Camera

Please contact SeeSense for further details

Features:

- Miniature camera system (no Control Unit)
- Ideal for viewing all welding processes in small and tight locations
- ONLY 20 x 20 x 79mm
- 2/3-inch sensor
- Global Shutter
- True Logarithmic Colour Sensor
- **USB output**
- **Alternative PAL or NTSC output version available**
- Wide Dynamic Range with 140 dB
- Totally Automatic operation
- Automatic switch-over at arc-ignition
- M12 lens (S-mount) or C-mount adapter
- Optional Water Cooling System

Specification:

Power Requirements	12 V DC
Power Supply	5-12 V DC
Image Sensor	NSC1003 2/3-inch CMOS Colour
Output Pixels	1280 x 1024 (8.7 x 7mm)
Output system	USB to PC
Lenses	M12 - S-mount Comprehensive range available Please contact SeeSense with your requirements
Aperture	Depends upon lens selection
Resolution	460 TV lines standard (vertical and horizontal)
Spectral Range	450 - 670 nm (450 - 1050 nm without IR filter)
Shutter Mode	Fixed
Frame Rate	PAL 25 fps / NTSC 30 fps (interlaced)
Dynamic Range	140 dB, logarithmic
Gain	Fixed
Camera cable	Contact SeeSense for your required length
Cooling	Optional water cooling system Uses 4mm push in connectors
Mount	Camera - 2 x M12 screw Cooling plate - Standard camera mount
Dimensions	Camera Head: 21mm (W) x 21mm (H) x 79mm (D) (Excluding Cable Gland)
Weight	Camera Head: To be confirmed

www.seesense.eu nigel@seesense.eu

Rev: 5.025.0215 E.&.O.E.