

The WVS-51 is small colour ultra wide dynamic range camera with instantaneous adaption to strong illumination changes at an individual pixel level.

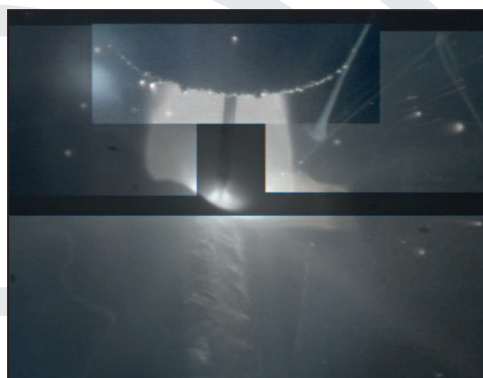
This makes the camera ideal for viewing welding processes before, during and after the arc is struck. **The WVS-51 is a fully automatic camera and no control unit is required.**

Interchangeable M12 (S-mount) lenses are easy to focus and (in welding applications) are protected from weld spatter by a special 'iris cover' which also helps improve image quality.

The WVS-51 has a 1.5m cable to USB-A connector for power and digital interface to software supplied with the camera.

#### Applications Include:

- Welding processes
- Seam inspection
- Laser cutting
- Surveillance in high contrast scenes
- Numberplate recognition at night



Welding illustration showing area of interest filters adjusting brightness

### The World's Smallest Colour Wide Dynamic Range Camera

#### Features:

- Stand alone camera - no controller required
- 2/3-inch CMOS Colour logarithmic sensor
- Ultra wide Dynamic Range with 140 dB
- **Totally Automatic operation copes instantly with strong illumination changes such as before, during & after welding**
- M12 lens includes "Iris Cover / Lens Protector"
- USB 2.0 output to digital interface with software
- Optional Water Cooling System
- Size only 21 x 21 x 79mm
- Camera weight approximately 60 g.
- M12 lens (S-mount) or C-mount adapter

#### Specification:

Power Requirements	5 - 12 V DC via USB-A connector
Power Supply	100 - 240 Volt AC
Image Sensor	2/3-inch 8.7 x 7.0mm Colour Bayer NSC1003 Colour GLOBAL Shutter
Output Pixels	1280 x 1024 6.8µm x 6.8µm
Lenses	M12 - S-mount 16mm standard <b>Contact SeeSense for other options</b>
Aperture	Depends upon lens selected; our special iris cover improves depth of field & protects the lens
Resolution	1.3MP
Dynamic Range	140 dB, logarithmic
Spectral Range	450 nm - 950 nm (optional IR cut filter)
Gain	Fixed
Camera output	1.5m cable from rear to USB
Cooling	Optional water cooling system using 4mm push in connectors
Mount	Camera - 2 x M3 x 0.5 tapped holes Cooling plate - Standard 1/4"-20 tripod mount
Dimensions	Camera Head: 21 x 21 x 79mm (W x H x D) (plus cable gland L=98mm)
Weight	Approximately 60 grammes
Operating Temp.	0°C to +80°C
Software	Control of camera connection, camera settings, and delivery of image data to computer memory

Rev: 1.026.0220 E.&.O.E.